



>LSC

Leading learning and skills



Leading learning and skills

North Yorkshire Area Team
Provider Event, December 10th 2008

The North Yorkshire Context

Content



Leading learning and skills

- **Economic and Social Context**

- **Response**

Economic and Social Context



Leading learning and skills

01

Economic and Social Context



Leading learning and skills

Credit crunch

Global and UK recession

Rising unemployment

Fewer vacancies

Uncertainty

Economic and Social Context



Leading learning and skills

The latest national unemployment figures **up to the end of August 08** reveal:

There has been a fall in both the number of people in employment and the employment rate

The number of unemployed people, the unemployment rate and the claimant count have all increased

The number of inactive people of working age has increased but the inactivity rate is unchanged

The number of vacancies has fallen and growth in average earnings, both including and excluding bonuses, has decreased

Summary of the latest UK unemployment figures (quarter ending Aug 2008)

- Unemployed - 1.79 million
- Unemployment rate - 5.7%
- Unemployed over 1 yr of total unemployed - 24.5% (2007 – 21.6%)
- Rise in Y&H unemployed in quarter to Aug 08 - 17,000

Summary of the latest UK unemployment figures (quarter ending Aug 2008)

- Reduction in vacancies by sector:

Distribution, hotels, restaurants	-	17,000
Finance & business services	-	10,000
Construction	-	4,000

- Age of newly unemployed (against previous Qtr)

16 – 17	-	4,000 (+ 2.1%)
18 – 24	-	56,000 (+ 11.2 %)
25 – 49	-	75,000 (+ 10.5%)
50+	-	28,000 (+ 12.4%)

Jobs and redundancies

•Lots of redundancies hitting the news at present:

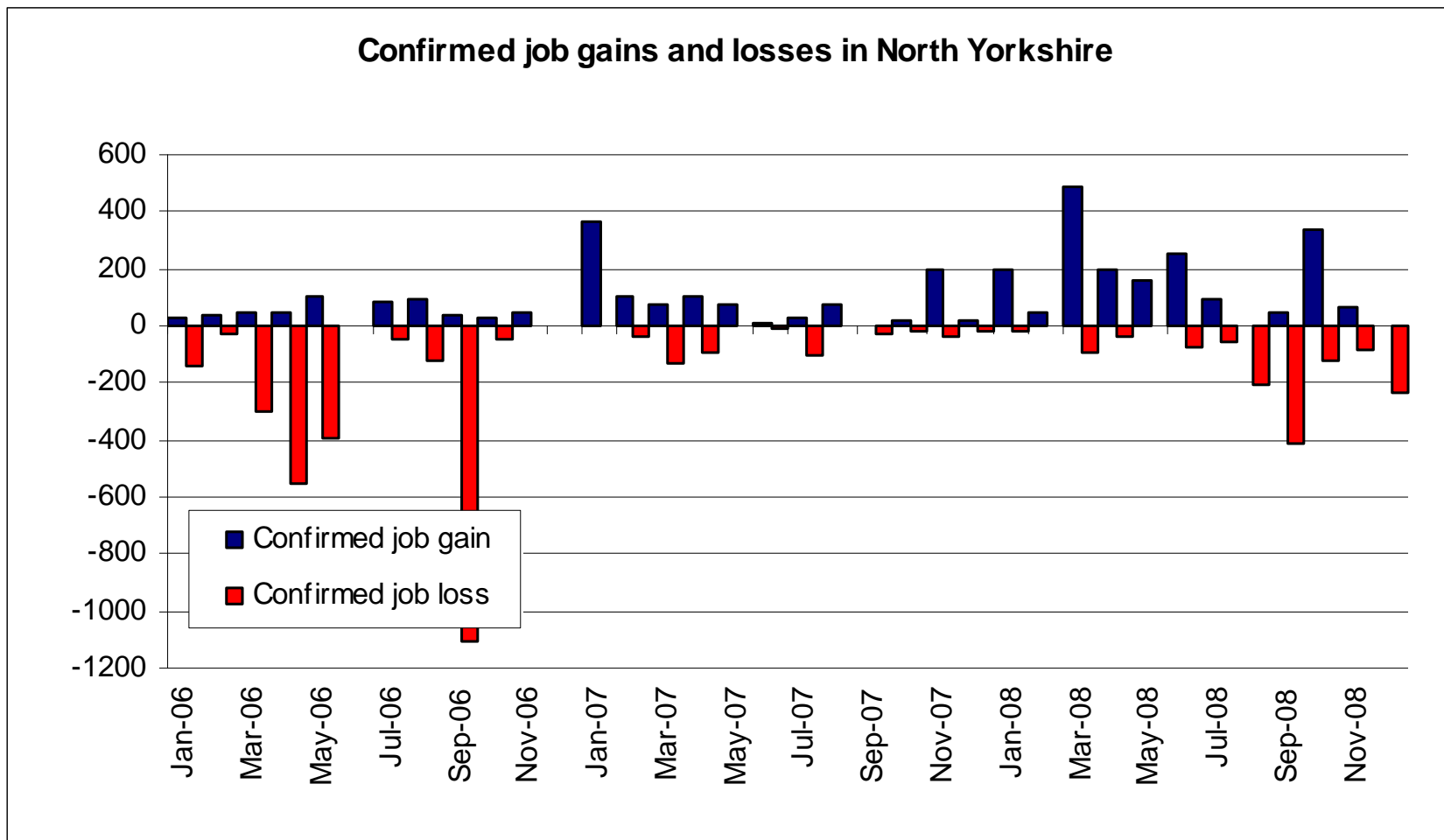
- Dunlopillo – Harrogate - 150
- Polestar Greaves – Scarborough - 190
- Rosebys – Selby – 87
- Clariant – Selby – 100+
- Magson's – York – 100+

“Confidence is also a critical part of business and we have seen this reducing over the course of the year.” – YNYCC President October 08

Economic and Social Context



Leading learning and skills



Source: Regional Yorkshire and Humber Jobs Database Dec 08

JSA Claimant Counts, York and North Yorkshire

Local Authority	June 2008		October 2008	
	Number	Rate %	Number	Rate %
Craven	292	0.9	386	1.2
Hambleton	539	1.1	650	1.3
Harrogate	894	0.9	1,216	1.3
Richmondshire	268	0.8	399	1.3
Ryedale	304	1.0	382	1.2
Scarborough	1,490	2.4	1,750	2.8
Selby	707	1.4	893	1.8
York	1,785	1.4	2,198	1.8
Totals	6,279	1.3	7,874	1.6

Rates calculated using the mid-2007 resident working age population. Source: Nomis

Jobcentre Plus – Vacancies Data

York and North Yorkshire

Unfilled vacancies Sept 2008	-	8,720
Unfilled vacancies Oct 2008	-	7,689
Change on month	-	-1,031 (-12%)
Change on year	-	-2,614 (-25%)
Notified vacancies Oct 2008	-	4,561
Change on month	-	179 (-3%)
Change on year	-	548 (-11%)

Economic and Social Context



Leading learning and skills

Jobcentre Plus – Vacancies Data

North Yorkshire only

Top ten notified vacancies by occupation	Care assistants and home carers	334
	Sales and retail assistants	308
	Cleaners, domestics	232
	Food, drink and tobacco process operatives	164
	Sales representatives	159
	Chefs, cooks	152
	Kitchen and catering assistants	125
	General office assistants/clerks	97
	Bar staff	96
	Waiters, waitresses	93
Top ten sought occupations by JSA On flow	Sales and retail assistants	200
	General office assistants/clerks	135
	Other goods handling and storage occupations	125
	Labourers in building and woodworking trades	85
	Van drivers	65
	Labourers in process and plant operations.	65
	Labourers in other construction trades .	55
	Bar staff	55
	Care assistants and home carers	45
	Cleaners, domestics	45

Source: JCP

Index of Multiple Deprivation (IMD) 2007

- Provides a relative ranking of areas across England according to their level of deprivation
- All LADs in North Yorkshire improved their rank on the IMD, from 2004 – 2007 with the exception of Ryedale

This implies that there is less deprivation in the sub region but...

IMD 2007

- ... significant concerns at SOA level.
Overall Scarborough Borough improved its ranking but **still has 7 SOAs in the top 10% nationally of most deprived:**

For many of these SOAs, measures show *deprivation has increased.*

- York, for the first time, has an SOA in the 10% nationally of most deprived (in the Westfield ward.)

IMD 2007 – Employment indicator

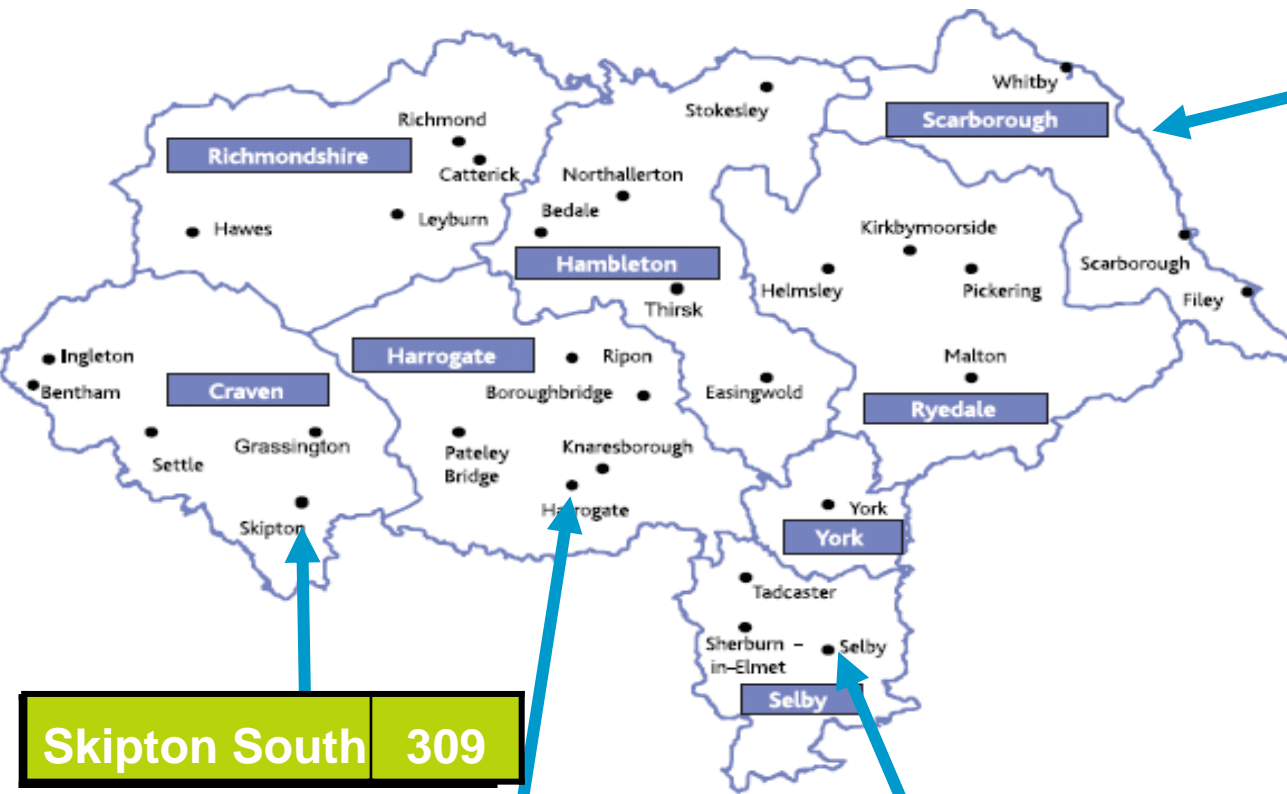
- Measure of unemployment and incapacity benefit take up
- 11 NY SOAs in 10% most deprived nationally. Most in Scarborough, but one SOA in York and one in Harrogate in Woodfield ward.
- 2 SOAs in Scarborough in 1% most deprived nationally where a third of the population can be described as employment deprived.

Economic and Social Context

Worst 10% NY wards for Rates of Workless Benefits Feb 07- 08 (ex. York)



Leading learning and skills



Skipton South	309
---------------	-----

Woodfield	403
Granby	461

Selby North	591
Selby South	348

Castle	834
Eastfield	799
North Bay	604
Woodlands	555
Ramshill	488
Falsgrave Park	410
Whitby West Cliff	353
Filey	484
Streonshalh	423
Central	408
Northstead	288
Stepney	283

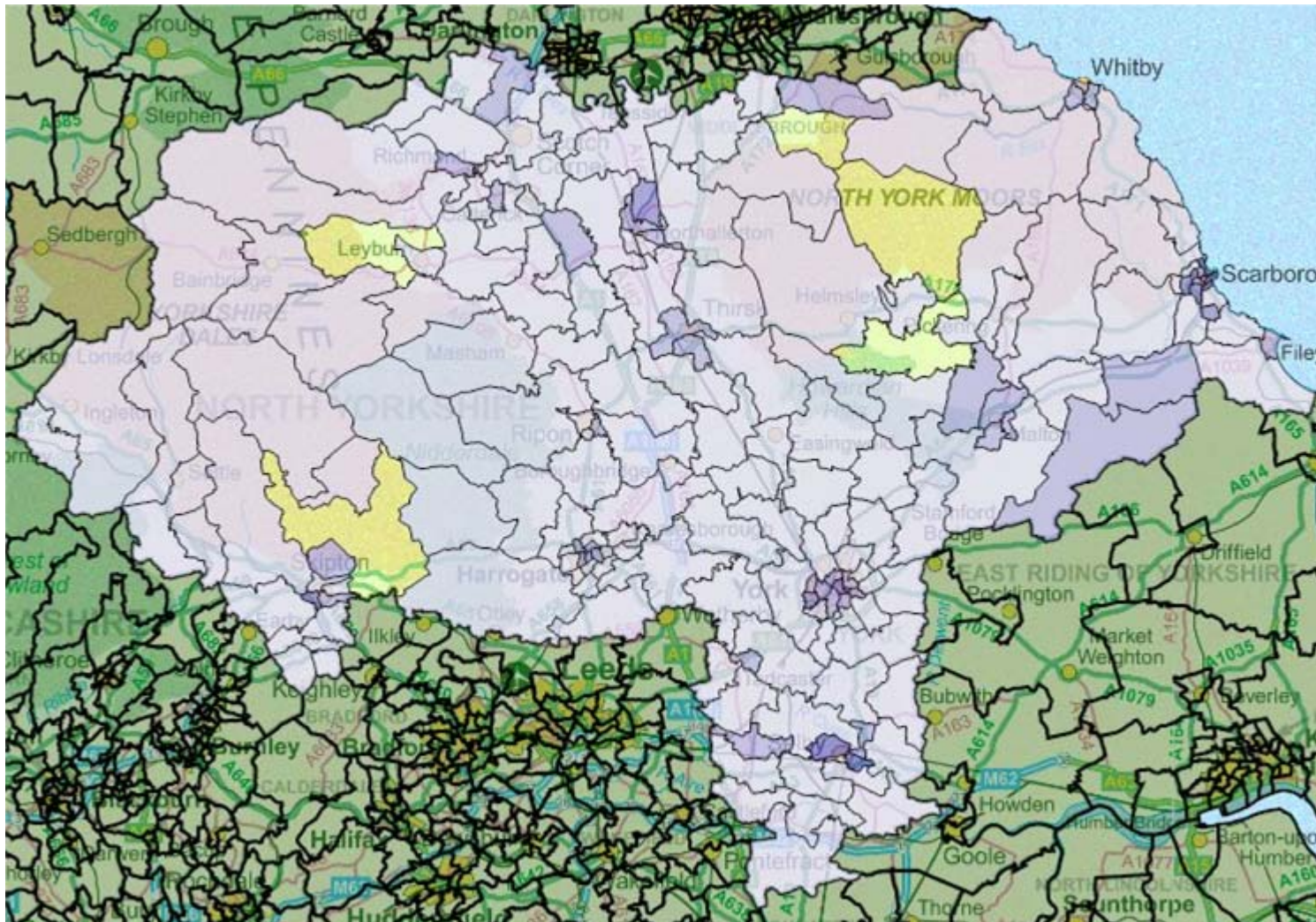
Source: NOMIS

Economic and Social Context

Proportion of claimants per resident
working age population by ward Sep 08



Leading learning and skills



Source: Nomis 2008

The Rural Challenge

- Most deprived people don't live in 'deprived areas'
- 2.4% of 'deprived' areas are rural but proportion of deprived people living in rural England much higher:
 - 18% of all people with a limiting long term illness
 - 18% of all people working in elementary occupations
 - 17% of all households earning less than 60% of the median income
 - 15% of adults with no qualifications

Approx. 19% population England lives in rural areas

Approx. 55% population of N. Yorkshire lives in rural areas

The Rural Challenge

- 28% of jobs in rural areas 'low wage'
- Low aspirations and lack of choice amongst young people
- High levels economic inactivity and worklessness
- Lower levels of collaboration between business and HE
- Less capital investment, lower funding
- **Rural GVA in England > all major cities outside London**

Response



Leading learning and skills

02

Redundancies: a co-ordinated regional response

- JCP, RDA, Business Link, LSC, HE, FE, LAs
- Clarity of roles
- Clear information from employers
- Engagement of Business Link
- Rapid Response teams
- Local Employment Partnerships
- Public Sector vacancies
- Public infrastructure partnerships
- Careers Advice Services
- Funded skills provision

Response



Leading learning and skills

Procedures and the 'offer'

- Information to JCP, then to RDA & LSC
- Intelligence from media, providers, other sources
- Discussions with employers
- Support to affected employees
- JCP support (and other agencies)
- LSC mainstream programmes
- Employability Skills Programme
- ESF Skills for Jobs
- Train to Gain
 - Mainstream
 - Enhancement Fund

Opportunity



Leading learning and skills

Scarborough

‘Most Enterprising Place in Britain 2008’

York

**Daily Telegraph Travel Awards 2008
Best UK City**

Skipton

‘Best street of the year 2008’